

Cluster Teams' Survey

Note: Words appearing in blue brackets [...] indicate key criteria being evaluated for the cluster teams. Answers to questions that relate to a same criterion were then compiled and averaged, so that the each criterion and the performance of the different cluster teams could be compared to one another.

Section I – Members working with Members: General Questions

- 1) To what type of member organization to you belong?
 - a) Elementary Public School -
 - b) Public High School
 - c) Elementary Catholic School
 - d) Catholic High School
 - e) Health Services Provider
 - f) Community Services Provider

- 2) In which COMPASS team are you a member?
 - a) Angus Youth Coalition
 - b) Barrie
 - c) Georgian West
 - d) Innisfil
 - e) North Simcoe
 - f) Orillia
 - g) South West Simcoe

- 3) How long have you been a Cluster team member
 - a) Less than 1 year
 - b) Between 1 year and 2
 - c) More than 2 years

Section II – Cluster Team Performance

Members of my cluster team...

Possible Answers

Strongly Disagree Disagree Unsure Agree Strongly Agree

- 4) Members of my cluster team have a clear and common sense of Cluster team vision and objectives [members effectiveness] + [clear and common vision and objectives]

- 5) Members of my cluster team have a clear and common sense of process and outputs. [clear and common vision and objectives]

- 6) Members of my cluster team work together to coordinate cluster team activities to avoid duplication of services and efforts. [efficient practices]
- 7) Members of my cluster team work together to expand each member's knowledge and potential for addressing relevant issues. [knowledge and training]
- 8) Members of my cluster team enrich each other's abilities and skills. [knowledge and training]
- 9) Members of my cluster team work together to establish positive relationships with community members whom the cluster team wants to engage and mobilize. [relationships]
- 10) Members of my cluster team encourage each other to actively participate in the cluster team's decision making process including issues and subjects discussed at meetings. [participation]
- 11) Members of my cluster team encourage each other to identify issues, analyze problems, select interventions and evaluate interventions. [participation]
- 12) Members of my cluster team successfully implement the vast majority of cluster team's work plan on a timely basis. [members effectiveness] + [action/activities]

III – Co-Chair Performance

Possible Answers

Strongly Disagree Disagree Unsure Agree Strongly Agree

- 13) Co-chairs of my cluster team contribute to cluster team success by facilitating a shared vision and objectives among cluster team members. [leaders effectiveness] + [clear and common vision and objectives]
- 14) Co-chairs of my cluster team contribute to cluster team success by facilitating understanding among cluster team members about team processes and outputs. [clear and common vision and objectives]
- 15) Co-chairs of my cluster team contribute to cluster team success by promoting the involvement of a broad base of members, both providers and schools, in the work of the cluster team. [efficient practices]
- 16) Co-chairs of my cluster team contribute to cluster team success by developing other leaders within the cluster team. [efficient practices]
- 17) Co-chairs of my cluster team contribute to cluster team success by providing resources to keep cluster team members informed about best practices on the issues. [knowledge and training]

- 18) Co-chairs of my cluster team contribute to cluster team success by providing resources to develop leadership skills among cluster team members. [\[knowledge and training\]](#)
- 19) Co-chairs of my cluster team contribute to cluster team success by facilitating positive community and school relationships with other local key players and stakeholders involved in the issues. [\[relationships\]](#)
- 20) Co-chairs of my cluster team contribute to cluster team success by encouraging members' active participation in the cluster team's decision-making processes. [\[participation\]](#)
- 21) Co-chairs of my cluster team contribute to cluster team success by facilitating open communication within the team. [\[participation\]](#)
- 22) Co-chairs of my cluster team contribute to cluster team success by working to engage a broad cross section of the community to participate in the cluster team's work. [\[participation\]](#)
- 23) Co-chairs of my cluster team contribute to cluster team success by providing necessary organizational oversight to the team based on evaluation data to ensure that the vast majority of the work plan is implemented on a timely basis. [\[leaders effectiveness\]](#) + [\[action/activities\]](#)

IV – Open comments

24) What is your COMPASS Cluster team doing well?

25) Where and how do you think your COMPASS cluster team can improve?

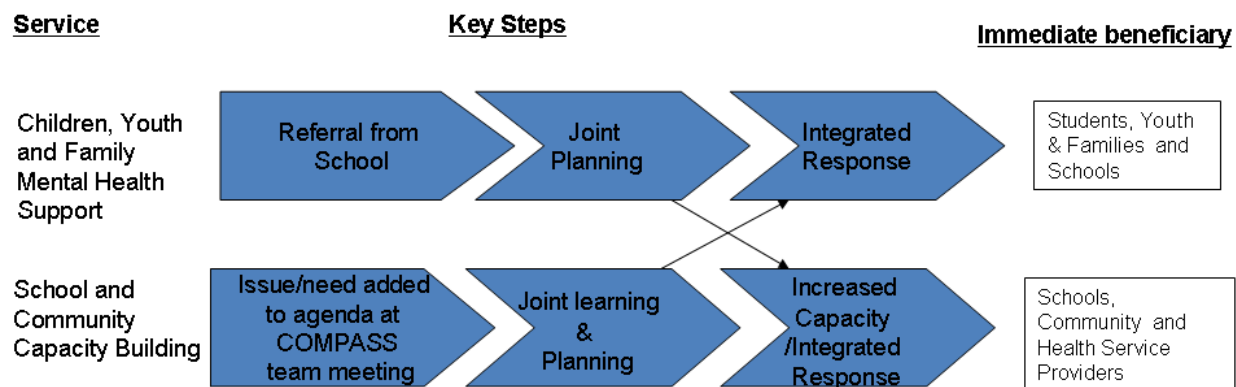
26) What changes to the COMPASS cluster team processes or activities will make it more attractive to schools?

Principals' Survey

COMPASS (Community Partners with Schools), an Initiative of the Simcoe County Coalition of Child, Youth and Family Services, promotes the connection between health and learning.

Purpose of Survey: In an effort to improve outcomes of the program, we are undertaking an annual program evaluation and your feedback is *invaluable* to this process. We have designed a short and simple on-line survey that should take no more than 10 minutes to complete. We appreciate you taking the time to complete this survey. All responses are anonymous.

Context: The COMPASS program offers two discreet but linked services. The first is children, youth and family mental health support initiated by a referral from a school. The second is a school and community capacity building function where, through information sharing and joint planning, schools and community and health service providers (not limited to mental health) improve their capacity to meet the special needs of children. The schematic below depicts the two COMPASS services.



This survey has three sections. The first section (questions 1-4) involves general information pertaining to your school and your level of awareness of the COMPASS program. The second section (questions 5 - 11) pertains to the COMPASS service - children, youth and family mental health support and Section 3 (questions 11 - 18) pertains to the second COMPASS service - school and community capacity building.

Section 1 – General Information

Question 1

Which of the following COMPASS Cluster Team geographies best describes the location of your school?

- a) Angus
- b) Barrie
- c) Georgian West - Collingwood, Stayner, New Lowell, Wasaga Beach
- d) Innisfil - Alcona, Stroud, Churchill, Gilford, Bell Ewart, Lefroy, Cookstown
- e) North Simcoe – Midland, Penetanguishene, Victoria Harbour, Elmvale
- f) Orillia, Ramara - Brechin, Coldwater, Cumberland Beach, East Oro
- g) South West Simcoe – Alliston, Tottenham, Beeton, Everett.

Question 2

What level is your school?

- a) Elementary
- b) Secondary

Question 3

To which board does your school belong?

- a) Simcoe Muskoka Catholic District School Board
- b) Simcoe County District School Board
- c) Other

Question 4

I am familiar with the COMPASS Program (prior to receiving this survey).

- a) Strongly disagree
- b) Moderately disagree
- c) Neither disagree or agree
- d) Moderately agree
- e) Strongly agree

Section 2 – COMPASS Children, Youth and Family Mental Health Support

Question 5

Approximately, how many referrals has your school made to the COMPASS Children Youth and Family Mental Health Support Workers (including referrals for individual, small group or class interventions, presentations) during the 08/09 school year?

Please enter the number here _____

(if your answer is 0 above, please skip to question 11)

Question 6

Our school's referral(s) led to timely action from the COMPASS Children, Youth and Family mental health workers.

- f) Strongly disagree
- g) Moderately disagree
- h) Neither disagree or agree
- i) Moderately agree
- j) Strongly agree

Question 7

Our school's staff was involved in the planning or delivery of the intervention.

- a) Strongly disagree
- b) Moderately disagree
- c) Neither disagree or agree
- d) Moderately agree
- e) Strongly agree

Question 8

Did the Children, Youth and Family mental health worker report back to the school on the outcome of the intervention?

- a) Strongly disagree
- b) Moderately disagree
- c) Neither disagree or agree
- d) Moderately agree
- e) Strongly agree

Question 9

Were the Student's or students' needs met as a result of the Children, Youth and Family mental health worker's intervention(s)?

- a) Strongly disagree
- b) Moderately disagree
- c) Neither disagree or agree
- d) Moderately agree
- e) Strongly agree

Question 10

Please provide comments on positive attributes of the service as well as improvements you would like to see in the COMPASS Children, Youth and Family Mental Health Support Service.

Section 3 – School and Community Capacity Building

Question 11

Over the 08/09 school year, did a representative from your school participate in the local COMPASS Cluster team meetings?

- a) Never (if never, please indicate why below)
- b) Sometimes
- c) Often

d) Always

Question 12

Over the 08/09 school year, was there an increase in your school's personnel's capacity to recognize students with inter-personal and mental health needs?

- a) Strongly disagree
- b) Moderately disagree
- c) Neither disagree or agree
- d) Moderately agree
- e) Strongly agree

Question 13

Over the 08/09 school year, did your school's personnel become more aware of resources available to students, families and school personnel in the community?

- a) Strongly disagree
- b) Moderately disagree
- c) Neither disagree or agree
- d) Moderately agree
- e) Strongly agree

Question 14

As a result of COMPASS involvement over 08/09, has your school increased its engagement with community service providers?

- a) Strongly disagree
- b) Moderately disagree
- c) Neither disagree or agree
- d) Moderately agree
- e) Strongly agree

Question 15

Engagement with community or health service providers is contributing to my ability to plan for the needs of the students in this school

- a) Strongly disagree
- b) Moderately disagree
- c) Neither disagree or agree
- d) Moderately agree
- e) Strongly agree

Question 16

How many issues/needs or topics did your school bring forward at one of the COMPASS Team meetings?

Please enter number here ____

Question 17

Please comment on why you did or did not bring forward issues/needs or topics at the COMPASS Team Meetings.

Question 18

Please provide comments on positive attributes of, and suggested improvements to, the COMPASS School and Community Capacity Building Service.
